



<b>Engine</b>	Cummins X15
<b>Net Power</b>	391 kW (524 hp / 532 ps) @ 1,800 rpm
<b>Standard Bucket Capacity</b>	5.0 m <sup>3</sup>
<b>Maximum Dig Depth</b>	975F: 7,680 mm 975F <sub>HD</sub> : 7,619 mm
<b>Operating Mass</b>	975F: 75,000-77,000 kg 975F <sub>HD</sub> : 80,050-81,000 kg

# 975F/975F<sub>HD</sub> EXCAVATOR

# 975F/975F<sub>HD</sub> SPECIFICATIONS >>>

## ENGINE

Emission Regulation	EU Stage V
Manufacturer	Cummins
Model	X15
Net Power	391 kW (524 hp / 532 ps) @ 1,800 rpm
Peak Torque	2,373 N·m @ 1,400 rpm
Number of Cylinders	6
Displacement	14.9 L

## HYDRAULIC SYSTEM

Main Pumps Total Flow	2x504 L/min
Relief Pressure, main	35 MPa
Relief Pressure, boost	37.3 MPa

## BOOM & ARM

Boom Length	7,060 mm
Arm Length	2,900 mm

## BUCKET PERFORMANCE

Std. Bucket Heaped Capacity (Referenced)	5.0 m <sup>3</sup>
--	--------------------

## SWING SYSTEM

Swing Speed	7.51 rpm
-------------	----------

## SERVICE CAPACITIES

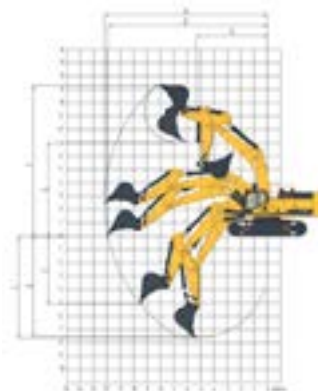
Fuel Tank	1,100 L
Engine Oil	46 L
Cooling System	77 L
Hydraulic Reservoir	360 L
Hydraulic System Total	680 L
DEF Tank	65 L

## UNDERCARRIAGE

	975F	975F <sub>HD</sub>
Shoe Width	650 mm	650 mm
Number of Shoes per Side	48	50
Number of Upper Rollers per Side	3	3
Number of Bottom Rollers per Side	8	9

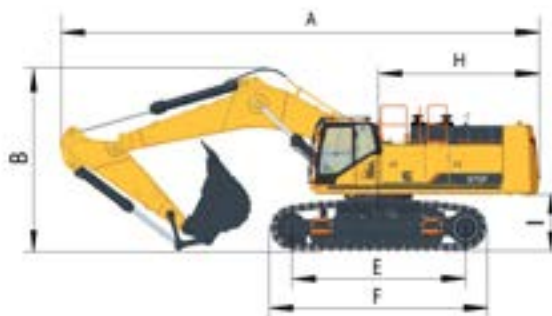
## TRACK DRIVE

	975F	975F <sub>HD</sub>
Maximum Travel Speed	4.7 km/h	4.4 km/h
Drawbar Pull	495 kN	495 kN



WORKING RANGE	975F	975F <sub>HD</sub>
A. Max. Digging Reach	12,160 mm	12,160 mm
B. Max. Digging Reach on Ground	11,900 mm	11,900 mm
C. Max. Digging Depth	7,680 mm	7,619 mm
D. Max. Digging Depth, 2.44 m (8') Level	7,530 mm	7,469 mm
E. Max. Vertical Wall Digging Depth	5,150 mm	5,089 mm
F. Max. Cutting Height	11,320 mm	11,381 mm
G. Max. Dumping Height	7,020 mm	7,081 mm
H. Min. Front Swing Radius	5,280 mm	5,280 mm
Bucket Digging Force (ISO)	438 kN	438 kN
Arm Digging Force (ISO)	331 kN	331 kN

DIMENSIONS	975F	975F <sub>HD</sub>
A. Transport Length	13,090 mm	13,090 mm
B. Transport Height	4,710 mm	4,771 mm
C. Track Gauge (with adjustable undercarriage)	3,350 / 2,710 mm	
D. Transport Width (with adjustable undercarriage)	4,000 / 3,360 mm	
E. Length to Center of Rollers	4,750 mm	5,000 mm
F. Track Length	5,990 mm	6,236 mm
G. Overall Width of Upper Structure	4,100 mm	4,100 mm
H. Tail Swing Radius	4,490 mm	4,490 mm
I. Counterweight Ground Clearance	1,495 mm	1,556 mm
J. Cab Height	3,620 mm	3,681 mm
K. Min. Ground Clearance	867 mm	917 mm
L. Track Width	650 mm	650 mm



Guangxi Liugong Machinery Co., Ltd.

No. 1 Liutai Road, Liuzhou, Guangxi 545007, PR China  
T: +86 772 3886124 E: overseas@liugong.com  
www.liugong.com

03/2025 Designed by LiuGong

Specifications and designs are subject to change without notice. Machines shown may include optional equipment. LiuGong standard and optional equipment may vary from region to region. Please consult your LiuGong dealer for information specific to your area. Engine power kW is converted to horsepower (1 kW=1.3596 ps and 1 kW=1.3410 hp) in this file.