



Engine	Yanmar 4TNV98C-SLYC
Rated Power	46.2 kW (62 hp / 63 ps) @ 2,200 rpm
Net Power	44 kW (59 hp / 60 ps) @ 2,200 rpm
Maximum Dig Depth	* 4,540 / 4,299 mm
Standard Bucket Capacity	0.28 m ³
Operating Mass	8,700-10,000 kg

909E_{CR}
EXCAVATOR

PERFORMANCE PARAMETERS

Operating Mass	8,700-10,000 kg
Std. Bucket Heaped Capacity (Referenced)	0.28 m ³
Maximum Travel Speed	4.8 km/h
Swing Speed	10.5 rpm
Drawbar Pull	* 75 / 80 kN
Bucket Digging Force (ISO)	67 kN
Arm Digging Force (ISO)	37 kN

* Mono Boom / Two-Piece Boom

ENGINE

Emission Regulation	Tier 4F / Stage V
Manufacturer	Yanmar
Model	4TNV98C-SLYC
Rated Power	46.2 kW (62 hp / 63 ps) @ 2,200 rpm
Net Power	44 kW (59 hp / 60 ps) @ 2,200 rpm
Peak Torque	241 N·m @ 1,430 rpm
Number of Cylinders	4
Displacement	3.319 L

UNDERCARRIAGE

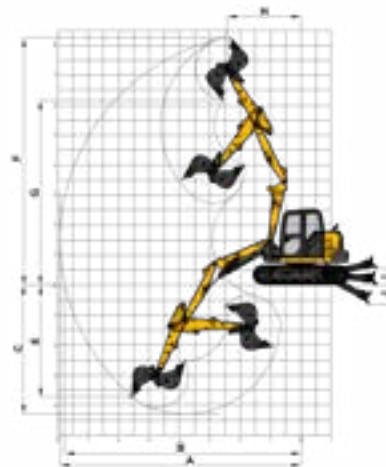
Number of Shoes per Side	* 39 / 43
Number of Upper Rollers per Side	1
Number of Bottom Rollers per Side	* 6 / 7

* Mono Boom / Two-Piece Boom

DIMENSIONS

A Shipping Length	* 6,400 / 6,670 mm
B Height – Top of Boom	* 2,415 / 2,445 mm
C Track Gauge	1,750 / 1,950 mm
D Undercarriage Width	2,200 / 2,400 mm
E Length to Center of Rollers	* 2,230 / 2,532 mm
F Track Length	* 2,845 / 3,147 mm
G Overall Width of Upper Structure	2,200 mm
H Tail Swing Radius	* 1,520 / 1,530 mm
I Counterweight Ground Clearance	760 mm
J Shipping Height– Top of Cab (without or with top guard)	2,660 / 2,770 mm
K Min. Ground Clearance	360 mm
L Track Shoe Width	450 mm
M Dozer Blade - Max Reach at Ground Level	* 1,850 / 2,020 mm

* Mono Boom / Two-Piece Boom



WORKING RANGE

Boom Length	* 3,375 / 2,100+2,011 mm
Arm Length	2,100 mm
A Max. Digging Reach	* 7,264 / 7,927 mm
B Max. Digging Reach on Ground	* 7,082 / 7,763 mm
C Max. Digging Depth	* 4,540 / 4,299 mm
D Max. Digging Depth, 2.5 m (8') level	* 4,163 / 4,040 mm
E Max. Vertical Wall Digging Depth	* 3,963 / 3,738 mm
F Max. Cutting Height	* 6,525 / 8,247 mm
G Max. Dumping Height	* 4,577 / 6,170 mm
H Min. Front Swing Radius	* 2,421 / 2,422 mm
I Lift above Ground	490 mm
J Depth below Ground	445 mm

* Mono Boom / Two-Piece Boom

HYDRAULIC SYSTEM

Main Pumps Total Flow	209 L/min
Relief Pressure, main	29 MPa

SERVICE CAPACITIES

Fuel Tank	110 L
Engine Oil	11.6 L
Cooling System	14.5 L
Hydraulic Reservoir	* 72 / 70 L
Hydraulic System Total	* 110 / 120.5 L

* Mono Boom / Two-Piece Boom

