

**LIUGONG**

# 924FE

## ELECTRIC EXCAVATOR

**MOTOR TYPE**  
**BATTERY**  
**RATED STORAGE CAPACITY**  
**MOTOR RATED POWER**  
**STANDARD BUCKET CAPACITY**  
**OPERATING WEIGHT**

IPMSM  
LFP  
423 kWh  
165 kW  
1 m<sup>3</sup>  
28,100 kg



B A T T E R Y   E L E C T R I C   V E H I C L E

TOUGH WORLD. TOUGH EQUIPMENT.

## PERFORMANCE PARAMETERS (HIGH-RISE CAB)

Operating Weight	28,100 kg
Std. Bucket Capacity	1 m <sup>3</sup>
Maximum Travel Speed	5.6 km/h
Swing Speed	10.5 rpm
Drawbar Pull	200 kN
Bucket Digging Force (ISO)	165 kN
Arm Digging Force (ISO)	105 kN
Max. Cab Lifting Height	2.5 m

## ELECTRIC SYSTEM

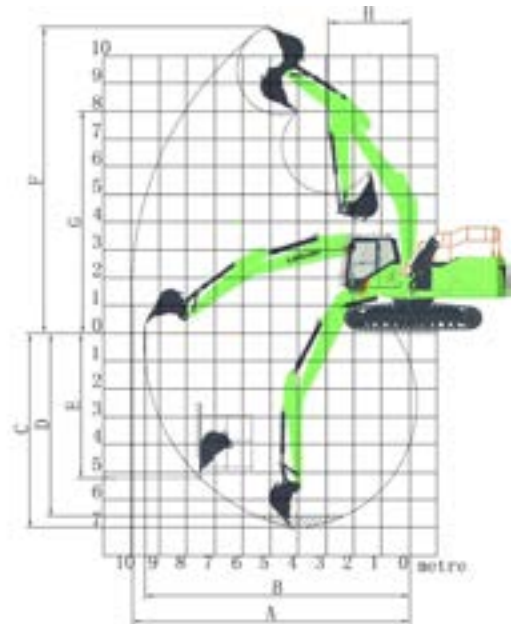
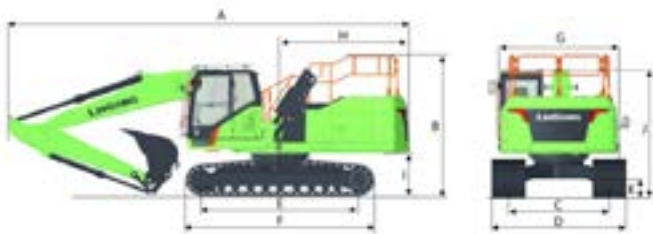
Motor Type	IPMSM
Battery	LFP
Rated Storage Capacity	423 kWh
Rated Voltage	618 V
Charge Time (300kW Charging Power)	≤ 80 min
Charging Port	DC Charging

## UNDERCARRIAGE

Number of Shoes per Side	49
Number of Bottom Rollers per Side	8
Number of Upper Rollers per Side	2

## DIMENSIONS

A Shipping Length	9,910 mm
B Shipping Height	3,428 mm
C Track Gauge	2,390 mm
D Undercarriage Width	3,090 mm
E Length to Center of Rollers	3,650 mm
F Track Length	4,445 mm
G Overall Width of Upper Structure	2,838 mm
H Tail Swing Radius	3,130 mm
I Counterweight Ground Clearance	1,060 mm
J Overall Height of Cab	3,150 mm
K Min. Ground Clearance	470 mm



## WORKING RANGE

Boom Length	5,710 mm
Arm Length	2,915 mm
A Max. Digging Reach	9,890 mm
B Max. Digging Reach on Ground	9,720 mm
C Max. Digging Depth	6,700 mm
D Max. Digging Depth, 2.5 m (8') Level	6,540 mm
E Max. Vertical Wall Digging Depth	5,140 mm
F Max. Cutting Height	9,740 mm
G Max. Dumping Height	7,020 mm
H Min. Front Swing Radius	3,150 mm

## HYDRAULIC SYSTEM

Main Pumps Total Flow	2 x 228 L/min
Relief Pressure, main	34.3 MPa
Relief Pressure, boost	37.3 MPa

## SERVICE CAPACITIES

Cooling System	25 L
Hydraulic Reservoir	112 L
Hydraulic System Total	220 L