



Working Height Max.
Horizontal Reach Max.
Overall Lift Capacity Max.
Overall Width and Length

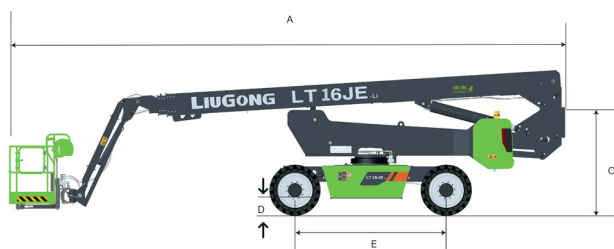
18.2 m (59'9")
11.3 m (37'1")
300 kg (661 lb)
2.3 x 8.44 m
(7'7" x 27'8")

LT16JE

Telescopic Boom Lift-Electric

TOUGH WORLD. TOUGH EQUIPMENT.

LT16JE SPECIFICATIONS >>>



DIMENSIONS

Working Height Max.	18.2 m (59'9")
Platform Height Max.	16.2 m (53'2")
Operating Amplitude Max.	11.9 m (39'1")
Horizontal Reach Max.	11.3 m (37'1")
Platform Size (LxWxH)	1.83 x 0.76 x 1.1 m (6' x 2'6" x 3'7")
A. Length (Stowed/Transport)	8.44 m (27'8")
B. Width (Stowed/Transport)	2.3 / 2.18 m (7'7" / 7'2")
C. Height (Stowed/Transport)	2.49 / 2.29 m (8'2" / 7'6")
D. Ground Clearance	0.37 m (1'3")
E. Wheelbase	2.36 m (7'9")

PRODUCTIVITY

Overall Lift Capacity Max.	300 kg (661 lb)
Platform Occupancy Max.	2
Platform Rotation	± 90°
Vertical Jib Rotation (Up/Down)	- 70° ~ + 72°
Turntable Rotation	360° Continuous
Turntable Tailswing (Boom Raised/Stowed)	0.8 / 1.28 m (2'7" / 4'2")
Drive Speed (Stowed)	5 km/h (3.10 mph)
Drive Speed (Raised)	1 km/h (0.62 mph)
Gradeability	45 %
Tilt Sensor Activation	X 5° / Y 5°
Turning Radius (Inside/Outside)	2.06 / 4.78 m (6'9" / 15'8")
Tire Size (Solid Off-road)	33 x 12 - 20
Drive Steering Type	4WD x 2WS

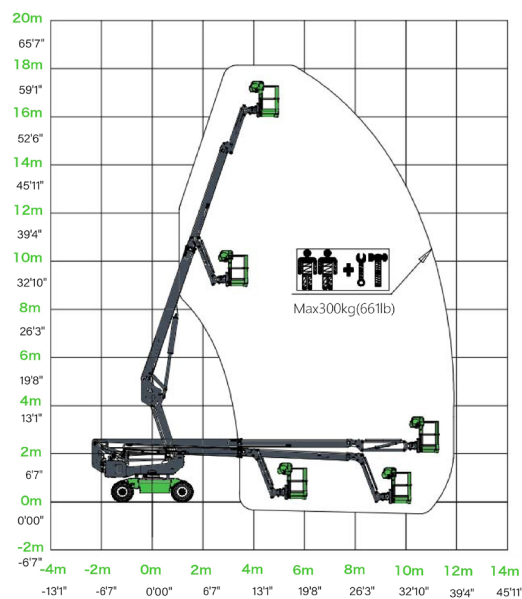
WEIGHT

Overall Weight	7,500 kg (16,534 lb)
----------------	----------------------

POWER

Battery (Lithium)	51.2 V / 304 Ah
Charger	48 V / 60 A
Lift Motor	AC 10 kW
Drive Motor	AC 3.3 kW
Auxiliary Power Unit	12 VDC
Hydraulic Tank Capacity	65 L (17 gal 1 pt)

LT16JE Working Range



Guangxi Liugong Machinery Co., Ltd.

No. 1 Liutai Road, Liuzhou, Guangxi 545007, PR China
T: +86 772 3886124 E: overseas@liugong.com
www.liugong.com

Specifications and designs are subject to change without notice. Machines shown may include optional equipment. Liugong standard and optional equipment may vary from region to region. Please consult your Liugong dealer for information specific to your area.

10/2024 Designed by Liugong